



Oil field leak, Orange County, August 2010



The leak occurred in a single 2" diameter pipe that had recently been tested for leaks.



The leak started where the piping crossed an unlined streambed.



It went undetected until so much oil collected that it flowed into a storm drain and into a larger concrete channel.



About $\frac{3}{4}$ of a mile down-stream the oil entered another, larger creek.
The total length of the oil spill eventually reached $1 \frac{1}{4}$ miles.

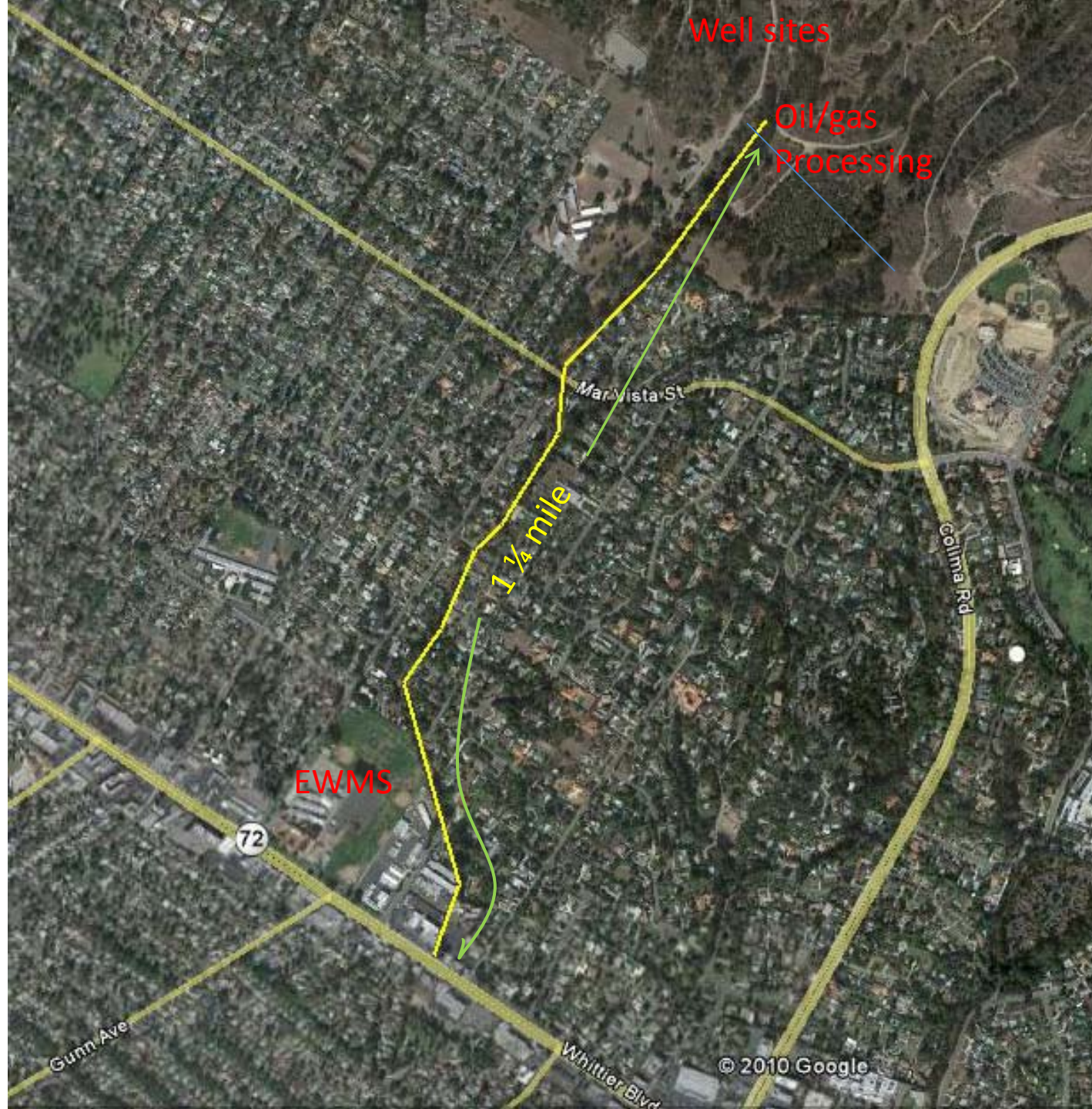
1 ¼ miles is the distance from the oil and gas processing plant to Whittier Blvd., flowing down La Canada Verde Creek, **behind 55**

homes along

- Catalina Ave
 - La Bajada Ave
 - La Vela Ave
 - 2nd Street
 - Montevideo Dr
 - Enramada Ave
- as well as

apartments on

- Christine Dr
- and behind
- East Whittier Middle School**





Cleanup crews worked 24 hours a day for several days in the initial response.



Heavy equipment, pumper trucks, and dozens of workers were needed to cleanup the oil mess. Most of the spill in Orange County was accessible directly from major roads. But a similar mishap in Whittier would require this cleanup work in residents' backyards.



One to three feet of contaminated soil had to be removed along much of the unlined channel. This work started in August and just ended in November.



Wildlife paid a heavy price for this accident. About 15 ducks were oiled and most did not survive the rescue efforts.